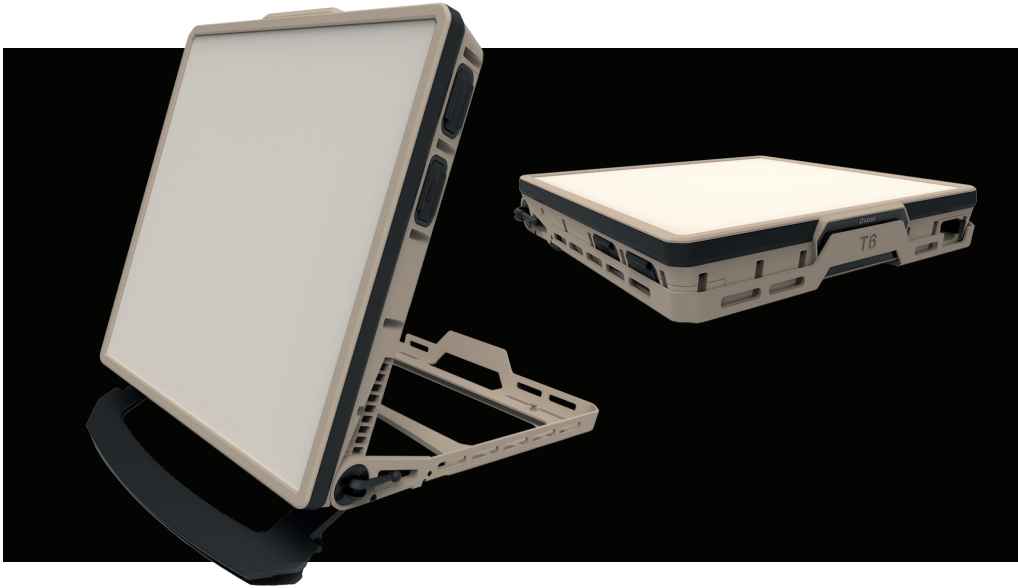




# Ovzon T6



The Ovzon T6 is a lightweight, rugged, laptop-sized broadband terminal that can be deployed, aligned, and connected within less than one minute and provide access to Ovzon’s high throughput satellite services.

Weather conditions around the world are often extreme, in deserts, in cold environments and in jungles. The reliability and availability of satellite services under such circumstances are critical. The new Ovzon T6, the world’s smallest On-The-Pause (OTP) terminal, is engineered to succeed in the most challenging situations and remote locations. The T6 is capable of reliable transmit and receive high data rates in a form factor and ease of use equivalent to more common L-Band terminals.

**Next Generation**

The Ovzon T6 terminal is an easy-to-use terminal with electrical polarization designed to access Ovzon’s advanced network. Ovzon’s unique flat panel antenna with electrical steered polarization, cooling system and all necessary user interfaces (graphical and connectors) are all integrated in a very small casing without sacrificing performance.

**Easily Powered**

To answer multiple user needs Ovzon has worked on multiple power supply scenarios.

The Ovzon T6 terminal can be powered by regular AC via power supply, by a BB2590 battery in combination AC and battery, or powered by batteries connected in parallel.

**Ovzon SATCOM-as-a-Service**

Ovzon offers different categories of satellite services with global reach using Ovzon’s satellite network. Ovzon Pegasus, enabled by Ovzon 3 bringing a steerable beam service offering, specifically developed for the critical tasks of the most demanding customers. Ovzon Hero, our advanced, customized high-performance service, developed for the critical tasks of the most demanding customers. Ovzon Go, our standard service for fixed usage model and committed information rates. Ovzon Plus, our entry level service offers flexible throughput rates as well as per GB data packages.

**Ovzon SATCOM-as-a-Service includes:**

- Ovzon Airtime
- Ovzon terminal OTP and OTM
- Internet Gateway access
- Terrestrial Backbone connectivity
- 24/7 customer service & support.

**HIGHLIGHTS**

---

6 kg    2 axis alignment

---

**SPECIFICATIONS**

Transmit*	Up to 70 Mbps
Receive*	Up to 120 Mbps
TX Frequency	12.75 to 13.25 GHz
RX Frequency	10.70 to 11.70 GHz
User Interface	Integrated display / Hosted GUI
Operating Temperature	-20°C to +55°C, -13°F to +131°F
AC input**	90 - 305 VAC 50/60Hz
Power consumption	Typical 140W, 24VDC
External battery (Not Included)	BB2590
Connectors for external modem integration	
Automatic polarization adjustment	
Assisted pointing elevation and azimuth	
RJ45 Connection for laptop, router, or network switch	
Wi-Fi connectivity	
Certification	CE Pending

**COMPACT PACKAGE**

Dimensions	337 / 343 / 57 mm, 13.2 / 13.5 / 2.2 in
Total weight	6 kg / 13.2 lb
Environmental	IP65, MIL-STD-810G

**ACCESSORIES**

Included: Soft transportation case, 1 AC/DC power supply, 1 Cable AC mains (EU,US or UK), Ethernet cable CAT 5e, BB2590 Battery adapter.

\*) Operating in Ovzon’s service, data rate depending on location within coverage and satellite.  
 \*\*) Supplied to external power supply.

**Ovzon**  
 Ovzon Sweden, Anderstorpövägen 16, SE-171 54 Solna, Sweden, Phone: +46 8 508 600 60  
 Ovzon USA, 13461 Sunrise Valley Drive, Suite 110, Herndon, VA 20171, United States, Phone: +1 703 276 3333,  
 E-mail: sales@ovzon.com, www.ovzon.com